

**RICOH**  
imagine. change.

# Ricoh Aficio SP 3500SF/SP 3510SF

**Multifunction B&W**

Copier  Printer  Facsimile  Scanner



SP 3500SF  
SP 3510SF

30 ppm monochrome

## An affordable, compact solution engineered for peak multifunction performance

Challenges loom large, even in the smallest office. The compact RICOH® Aficio® SP 3500SF/SP 3510SF offers an innovative multifunction feature set that fits your unique needs and budget. It handles a wide range of document management tasks easily like ID Card Copying, Internet Faxing, and Scan-to-Email with LDAP (Lightweight Directory Access Protocol) support. Operate more efficiently with fast 30 page-per-minute output speeds, and maximize uptime with Ricoh's proven All-In-One Print Cartridge technology. Increase productivity with your choice of an Automatic Document Feeder (ADF) or Automatic Reversing Document Feeder (ARDF) to make multi-page scanning and faxing a snap. The intuitive control panel with an easy-to-view 4-line LCD screen simplifies multitasking and allows home offices and workgroups to run more smoothly than ever.

### Consolidate and save

A smaller office doesn't mean less work — only fewer resources. The multifunctional Ricoh Aficio SP 3500SF/SP 3510SF handles a wider range of tasks cost-effectively. It consolidates copy, print, scan and fax capabilities in an easy-to-use, desktop solution that streamlines everyday document management workflow for superior productivity. With its competitive hardware costs, electronic distribution features and intuitive 4-line LCD control panel, this convenient device is the perfect choice for multitasking on a budget.



### Produce more, efficiently

Keep pace with the busiest demands. With a fast 30 second warm-up time and copy/print speeds of up to 30 pages-per-minute, users can transition to the next job with ease and efficiency. Deliver crisp, clear output with up to 1,200 x 1,200 dpi for applications needing the best possible output quality. The Ricoh Aficio SP 3500SF includes a standard 35-Sheet Automatic Document Feeder (ADF) and the SP 3510SF offers a standard Automatic Reversing Document Feeder (ARDF) to expedite copying, scanning and faxing for up to 50 two-sided sheets.



### Adapt to every need, every day

Streamline a wider range of office tasks with the Ricoh Aficio SP 3500SF/SP 3510SF. Two-sided documents like insurance cards and checks can be reproduced on the same side of a single sheet with one press of a button with ID Card Copy. The standard 250-Sheet Paper Tray and 50-Sheet Bypass Tray accommodate thick paper stocks up to 90 lb. Index so users can produce more types of documents in-house. Expand paper capacity to 550 sheets by adding the optional 250-Sheet Paper Feed Unit to handle larger jobs and growing volumes.



# Enjoy multitasking that fits your office, budget and desktop

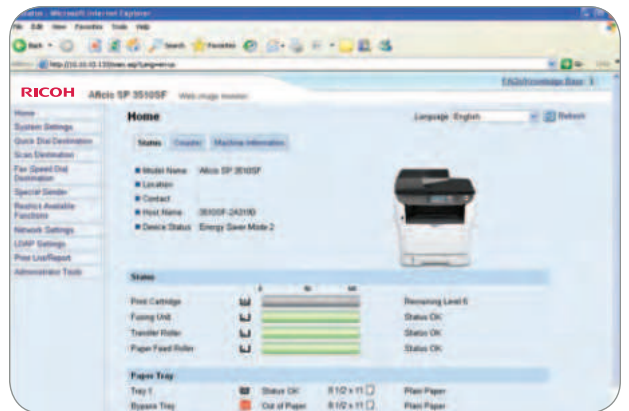
## Operate anywhere, with ease

Maximize resources with a sleek, stylish multifunction device that fits seamlessly into any office environment. The Ricoh Aficio SP 3500SF/SP 3510SF occupies less than 2 square feet of space for easy placement on or behind the front desk. For optimal convenience, users can generate output at the device using a USB memory or SD card for walk-up operation without a computer. A front-access design simplifies maintenance, and convenient, user-friendly All-in-One print cartridges make toner replacement a snap. Plus, the four-line, intuitive LCD control panel offers fast, easy access to system functions, supply status and contact lists.



## Connect with your network

The Ricoh Aficio SP 3500SF/SP 3510SF offers network capabilities in peer-to-peer or shared-use environments with standard USB 2.0 or 10/100Base-TX Ethernet interfaces. It accommodates the latest Windows and Macintosh technology with support for PCL6 and PS3 emulation, as well as utilities for UNIX and Citrix distributed printing environments. Plus, it offers device management tools, including Web Image Monitor, Ricoh Universal Printer Driver and Ricoh Device Manager NX to manage the device quickly, even from a remote location. Fax documents in seconds and reduce long-distance charges with a 33.6 Kbps Super G3 modem, built-in PC faxing, Internet faxing, and LDAP for accessing company e-mail servers.



## Scan and share

Advanced scanning capabilities enable users to improve how documents are shared with multiple recipients. The Ricoh Aficio SP 3500SF/SP 3510SF offers high-quality, full-color or monochrome TWAIN/WIA scanning at up to 1,200 x 1,200 dpi optical resolution with 19,200 x 19,200 dpi driver resolution. Users can distribute electronic documents immediately at no cost with Scan-to-Email/ Folder/FTP/USB.





# Ricoh Aficio SP 3500SF/SP 3510SF

SYSTEM SPECIFICATIONS

Aficio®

## General Specifications

Ricoh Aficio SP 3500SF	Part # 406967
Ricoh Aficio SP 3510SF	Part # 406971
Configuration	Desktop
Imaging Process	Laser beam scanning/marketing and electro-photographic printing using dry, monocomponent toner development
Reading Element	Flatbed scanner with full-color CCD array image-sensor
Control Panel	4-line monochrome LCD
Print/Copy Speed	30 pages-per-minute/copies-per-minute
Warm-Up Time	30 seconds or less
Recovery Time	18 seconds or less
from Energy Saver Mode	
First Print Speed	8 seconds or less
Grayscale	256 levels
Document Feeding	SP 3500SF: Standard 35-Sheet Automatic Document Feeder (ADF) SP 3510SF: Standard 50-Sheet Reversing Automatic Document Feeder (ARDF)
Duplex	SP 3500SF: Manual SP 3510SF: Automatic (@ 50% productivity)
Standard Paper Capacity	250-Sheet Paper Tray plus 50-Sheet Bypass Tray
Paper Supply (Optional)	250-Sheet Paper Feed Unit (550-Sheet maximum paper capacity)
Paper Sizes	<b>Standard Paper:</b> Letter (8.5" x 11"), Legal (8.5" x 14"), Half Letter (5.5" x 8.5"), Executive (7.25" x 10.5"), F (8" x 13"), Folio (8.25" x 13"), Foolscap (8.5" x 13"), A4 (210 x 297 mm), A5 (148 x 210 mm), A6 (105 x 148 mm); <b>Custom Size:</b> 3.9" x 5.8" to 8.5" x 14" (100 x 148 mm to 216 x 356 mm) <b>Bypass Tray:</b> Letter (8.5" x 11"), Legal (8.5" x 14"), Half Letter (5.5" x 8.5"), Executive (7.25" x 10.5"), A4 (210 x 297 mm), A5 (210 x 148 mm), A6 (105 x 148 mm); Envelopes: Com10, Monarch, C6, C5, DL; <b>Custom Size:</b> 3.6" x 5.8" to 8.5" x 14" (90 x 148 mm to 216 x 356 mm) <b>Optional Paper Feed Unit:</b> Letter (8.5" x 11"), Legal (8.5" x 14"), Half Letter (8.5" x 5.5"), A4 (210 x 297 mm), A5 (210 x 148 mm)
Paper Weight	<b>Standard Paper Tray and Bypass Tray:</b> 14 – 43 lb./90 lb. Index (52 – 162 g/m <sup>2</sup> ) <b>Optional Paper Feed Unit:</b> 16 – 28 lb. Bond (60 – 105 g/m <sup>2</sup> ) When Duplexing (SP 3510SF only): 16 – 28 lb. Bond (60 – 105 g/m <sup>2</sup> )
Paper Type	<b>Paper Tray:</b> Plain Paper, Recycled Paper, Cardstock <b>Bypass Tray:</b> Plain Paper, Recycled Paper, Envelopes, Cardstock, Labels <b>Optional Paper Feed Unit:</b> Plain Paper, Recycled Paper
Output Tray Capacity	Up to 125 sheets (face down)
Power Requirements	110V – 120V, 60 Hz
Power Consumption	Maximum: 850W SP 3510SF: Energy Saver: less than 10W 1.99 kWh/week (SP 3510SF)
TEC Value	
Dimensions (WxDxH)	SP 3500SF: 16.5" x 15.6" x 17.4" (420 mm x 397 mm x 442 mm) SP 3510SF: 16.5" x 15.6" x 18.1" (420 mm x 397 mm x 462 mm)
Weight	SP 3500SF: 38.5 lbs. (17.5 kg*) SP 3510SF: 40.5 lbs. (19 kg*)
Safety Regulations	UL60950-1, FCC47 CFR, Chapter 1, Part 15, Class B

\*Includes consumables.

## Print Controller

CPU	350 MHz
Print Resolution	600 x 600 dpi, 1200 x 600 dpi, 1200 x 1200 dpi (@ 50% productivity)
Standard Interfaces	USB 2.0, 100Base-TX/10Base-T Ethernet
Memory	128 MB (standard and maximum)
Printer Languages/Drivers	PCL 5e*, PCL6, PostScript 3 emulation *PCL 5e driver is not provided (controller can receive PCL 5e command from host).
Fonts	PCL/PS3: 80 fonts
Network Protocols	TCP/IP, IPP
Operating Systems	Windows XP, Vista, 7, Server 2003, Server 2003/R2, Server 2008, Server 2008/R2 Mac OS X 10.4 or later Citrix MetaFrameXP, Citrix PresentationServer 3.0, 4.0 (32-bit only), 4.5, XenApp 5.0+, Ricoh UNIX Filter
Advanced Printer Features <sup>1</sup>	Reduce/Enlarge (scaling), Locked Print, Collate Layout (N-up), Duplex, Front Cover Sheet, Mirror Image Print, Dithering, Toner Saving, Watermark, User ID, User Code, Rotate Print, Reverse Order Print, Do Not Print Blank Page
Software Utilities	Embedded: Web Image Monitor, @Remote (limited support) <sup>2</sup> Provided on CD-ROM: PCL 6 emulation driver, PS3 emulation driver, Printer Utility for Mac OS X (PPD), TWAIN Scanner Driver, Presto!® PageManager®, PC Fax Utility Available via Download from Website: Ricoh Universal Printer Driver, Ricoh Device Manager NX, Device Option Utility for Citrix, Ricoh UNIX Filter

<sup>1</sup>Varies by active PDL/Driver.

<sup>2</sup>Counter information only.

## Copier Specifications

First Copy Speed	Platen: 12 seconds ADF/ARDF: 11 seconds or less
Single Document	30 copies-per-minute (Letter); ADF Platen (SP 3500SF): 30 copies-per-minute (Letter); ARDF (SP 3510SF): 30 copies-per-minute (Letter) Multiple Document Single Copy
Multiple Copy Speed	ADF: (SP 3500SF): 20 copies-per-minute; ARDF: (SP 3510SF): 20 copies-per-minute
Copier Resolution	ARDF/ADF: 600 x 300 dpi Platen: 600 x 600 dpi
Quantity Indicator	1 – 99
Original Type	Sheet/Book/3D objects
Original Size	Platen: Letter (8.5" x 11"), A4 (210 mm x 297 mm) ADF/ARDF: Letter (8.5" x 11"), Legal (8.5" x 14"), A4 (210 mm x 297 mm) SP 3510SF only, through the ARDF
Duplex Copy	SP 3510SF only, through the ARDF
Reproduction/Zoom Ratios	50%, 65%, 78%, 93%, 129%, 155%, 200%, 400%
Copier Features	Image Density Adjustment (manual only: 5 levels), Copy Mode (Text/Photo/Mixed), Memory Copy, Auto Duplex Copy (SP 3510SF only), Combine Copy (2 in 1, 4 in 1), ID Card Copying, Electronic Sorting (standard collation, ADF only), Photo Mode

## Scanner Specifications

Scanning Device	Full-color CCD array image-sensor
Resolution	Scanner: 1200 x 1200 dpi; Driver: Max. 19200 x 19200 dpi (interpolated)
Compatibility	TWAIN, WIA
Scan Modes	Black & White: less than 5 seconds; Grayscale: less than 5 seconds; Color: less than 10 seconds
Max. Original Size	Platen: Width up to 8.5", length up to 11.69"; ADF/ARDF: Width up to 8.5", length up to 14"
PC Interface	USB 2.0, 10/100Base-TX
Scanning Capabilities	ADF, ARDF, TWAIN via Network and USB, WIA, Scan-to-Email, Scan-to-Folder, Scan-to-FTP, Scan-to-USB memory
Supported File Formats	TIFF, JPEG, PDF

## Facsimile Specifications

Circuit	PSTN/PBX
Compatibility	ITU-T G3
Resolution	200 x 100 dpi, 200 x 200 dpi
Maximum Print Width	8.2"
Compression	MH/MR/MMR/JBIG (Basic)
Scanning Speed	Less than 5 seconds (200 dpi)
Maximum Scan Width	8.3"
Modem Speed	33.6 Kbps
Transmission Speed	Approx. 3 seconds*
Memory Backup	1 hour
SAF Memory	100 pages
Fax Features	20 One-Touch Dials, 200 Speed Dials, Internet Fax, Paperless Fax, Redial, Direct Fax Number Entry, Auto Redial, Time Indicator, PC Fax (transmission only), Broadcasting (100 stations), Contrast Control (3 level Light/Normal/Dark – manual setting), Auto Answer, Immediate/Memory Transmission, Auto/Manual/Substitute Reception, Error Correction Mode, Smoothing, Forwarding (to e-mail address), Book Fax, Double-sided Transmission, TTI/CSI, LDAP support, Address Book (200 total fax # entries), Telephone Answering Machine Interface

\*ITU No. 1 chart, Compression: MMR, Resolution: Standard speed: 33.6 kbps

## Hardware Accessories

<b>Paper Feed Unit TK1080 Part #406496</b>	
Capacity	250 sheets
Paper Sizes	Letter (8.5" x 11"), Legal (8.5" x 14"), Half Letter (5.5" x 8.5"), A4, A5
Paper Weights	16 – 28 lb. Bond (60 – 105 g/m <sup>2</sup> )
Dimensions	14.6" x 15.1" x 3.5" (370 x 383 x 89 mm)
Weight	Less than 5.3 lb. (2.4kg)

## Consumables

	Part #	Yield
Standard Yield All-In-One Print Cartridge SP 3400LA	406464	2,500 prints*
High Yield All-In-One Print Cartridge SP 3500XA	406989	6,400 prints*

\*Declared yield values based on ISO/IEC 19752. Actual yields may vary based on types of images printed and other factors.

The Ricoh Aficio SP 3500SF/SP 3510SF ships with a starter toner cartridge that yields 1,500 pages using the ISO/IEC19752 standard.

For maximum performance and yield, we recommend using genuine Ricoh parts and supplies.

## Warranty

The Ricoh Aficio SP 3500SF/SP 3510SF is under warranty against defects for a period of one year from the date of purchase. Consumables are under warranty for a period of 90 days from the date of purchase. Please refer to warranty documents shipped with the product for more details.

**RICOH**  
imagine. change.

www.ricoh-usa.com

Ricoh Americas Corporation, Five Dedrick Place, West Caldwell, NJ 07006, 1-800-63-RICOH  
Ricoh® and the Ricoh Logo are registered trademarks of Ricoh Company, Ltd. All other trademarks are the property of their respective owners. The content of this document, and the appearance, features and specifications of Ricoh products and services are subject to change from time to time without notice. Products are shown with optional features. While care has been taken to ensure the accuracy of this information, Ricoh makes no representation or warranties about the accuracy, completeness or adequacy of the information contained herein, and shall not be liable for any errors or omissions in these materials. Actual results will vary depending upon use of the products and services, and the conditions and factors affecting performance. The only warranties for Ricoh products and services are as set forth in the express warranty statements accompanying them.

R3345-1



Only the SP 3510SF is Energy Star compliant.